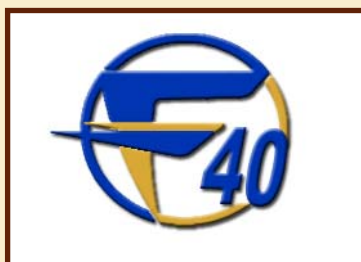




*Whether you want to build your own or
just step aboard and turn the key,
Fusion have a solution for you.*

**Kit Components
Motoraway - Sailaway
Fully Factory Finished**

**Phone: 07 49464659
Fax: 07 49464679**

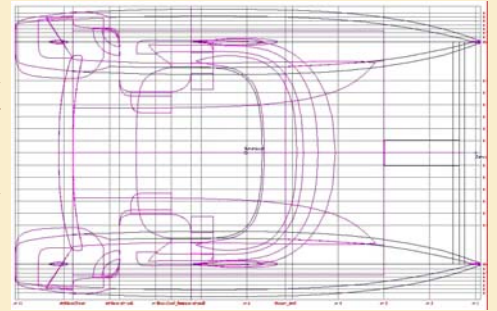


**Email: jim@fusioncats.com
web: www.fusioncats.com.au**

INTRODUCTION

A project like the Fusion 40 does not just happen, it is dilligently planned. World-wide analysis is done capturing the data that will eventually make up the hundreds of pages that become the business plan.

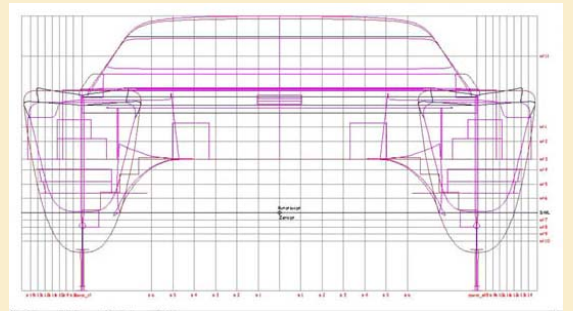
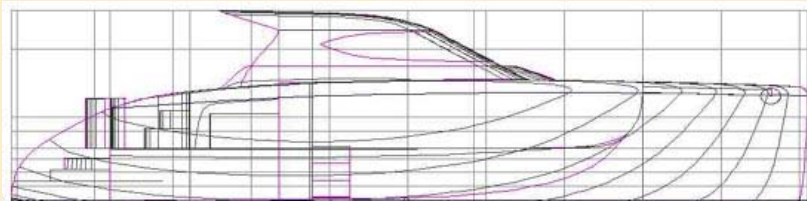
Unlike most Catamaran manufacturers, the Fusion 40 was designed primarily with the serious cruiser in mind, and not dictated to by some Charter organisation. Lengthy discussions with specialist Multihull Yacht brokers were undertaken to rationalise the preferred requirements of the buying public and sizes were analysed before the dimensions were given to the Garry Lidgard Naval Design Studio.



One critical element was to have the vessel produced by the Infusion Moulding process and to achieve this, the leading Australian authority “Composites Innovation” was engaged to supervise the manufacture of moulds from computer design through to the use of a 5 axis router for accurate component mould manufacture.



This process has brought about a gelcoat finish on the Fusion 40, that most companies only dream of, and a weight and strength ratio never before seen on a production catamaran. Whether you are looking for a cat to do the weekend race, coastal hop, or cruise oceans, Fusion 40 is at the leading edge.



INFUSION TECHNOLOGY

This method of construction employs procedures and cloth used in the aerospace and defence industries.

Infusion by vacuum gives a better result than the pre-impregnated systems because it helps prevent air bubbles staying in the laminate and also gives a better fibre/resin ratio.

The infusion process is carried out within an enclosed environment hence a very environmentally friendly process.



This technology allows the cloth and cores to be layed with precision and uniformity before the infusion, which guarantees bonding quality.

This method of construction is preferred for Surveyed vessels because of it’s repeatability and the access to the cloth and core layers for inspection prior to infusion.

Boats are usually built using vinylester resin with a guaranteed high Tg. The vinylester is a resin that provides results comparable to epoxy, and helps eliminate the chance of Osmosis.

Mechanical tests have been carried out by STS, Structural Testing Services, of the University of Southern Queensland and these are available to companies on request.

“The World’s 1st Production Catamaran Kit”



Delivered in
Containers
and
Assembled
within
30 Days



Some Options are shown on this Motoraway

“Anyone could assemble this” . . .

The Fusion 40 "Kit Cat" is revolutionising the boat-building industry. This vessel has been designed from the beginning as a high performance cruising catamaran that can be stacked into 40 foot containers and freighted anywhere in the world.

By producing this modern catamaran in fibreglass modules, which in turn fit in containers, it has meant delivery throughout Australia is simple and it has opened the doors to worldwide marketing of



the Fusion 40. The cost savings on overseas shipping being in excess of \$40,000.00.

By producing a catamaran in sections has great appeal to the professional boatbuilder as well as amateurs, as they can install mechanical and furniture items as they assemble, rather than working in confined spaces.

No longer are you dictated to, Fusion Catamaran P/L. supplies the structural components along with the hull and deck sections but leaves the entire fitout and layout to the owner. This allows the



builder to work with their preferred materials, and allows for personal preferences as to accommodation and functions. However Fusion Catamarans have a very comprehensive Multihull Construction Guide web site to support clients.

By producing the supplied components in Foam/Glass, they are weather proof and even if your build project ran into years, there will be no deterioration, shrinkage, dry rot, etc., of the components

Instead of spending 6 months gluing strips and planks, then glassing over and



fairing, fairing, fairing only to finish up with a product that has small appeal, you can now have a beautifully gelcoated, factory finish on your Catamaran, which can be assembled in as little as 12 days (4 men).

Having gelcoated, fibreglass, foam cored and production built components (to Class "A" CE Certification) provides comfort to the owners that his vessel will be highly sought after when it comes time to sell.

Also by having a worldwide marketing base through the



Agent/Builder network, an owner can gain comfort in the fact that anywhere he travels he can be assured of a helping hand as well as recognition of his Fusion.

The Fusion 40 can be built to survey standard both in Australia and abroad, therefore giving it wide appeal in the Charter industry.

For a full pictorial coverage on the assembly of this fabulous Kit, check out an owner/builder's website www.cruisingnorth.com.au



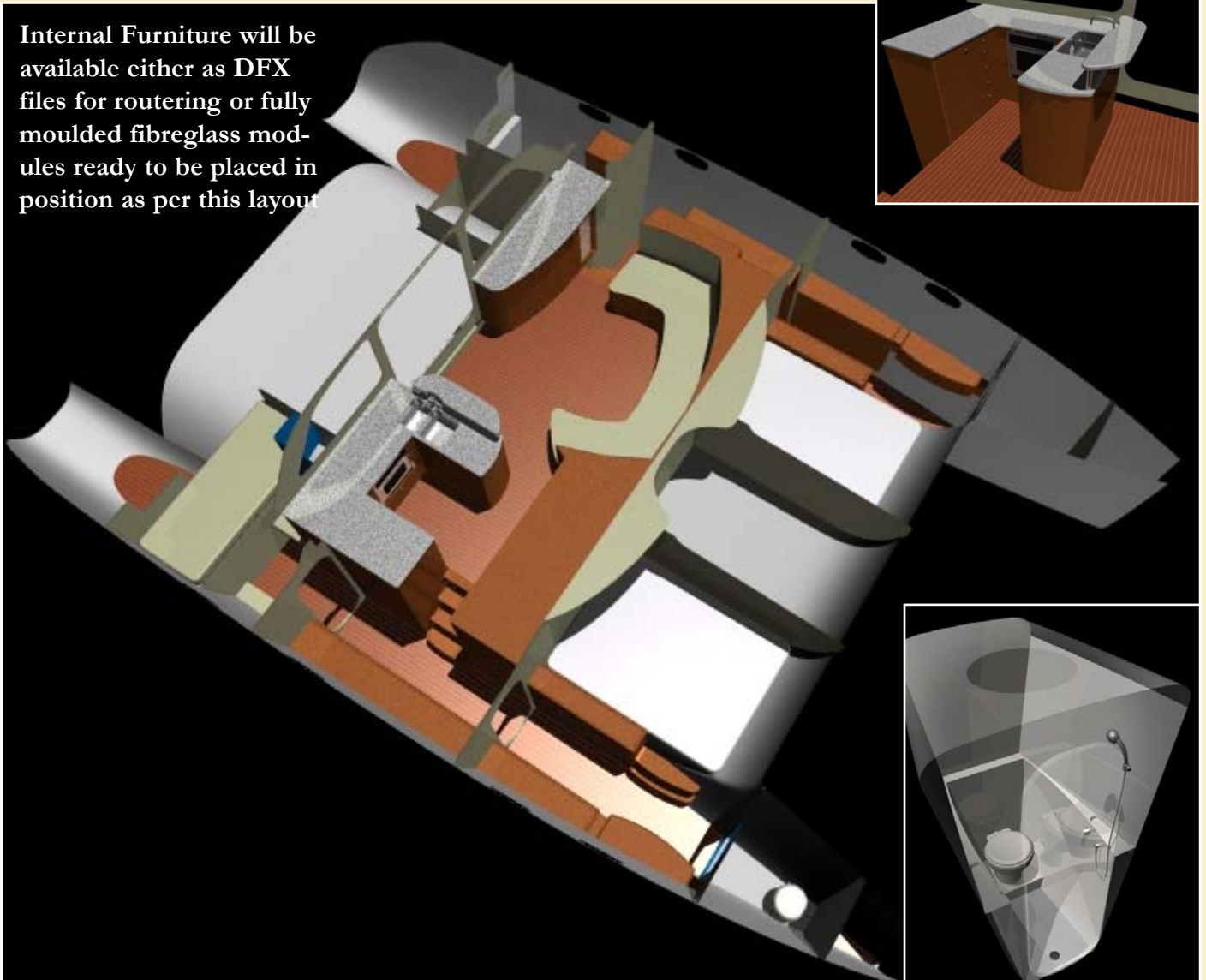
Specifications:

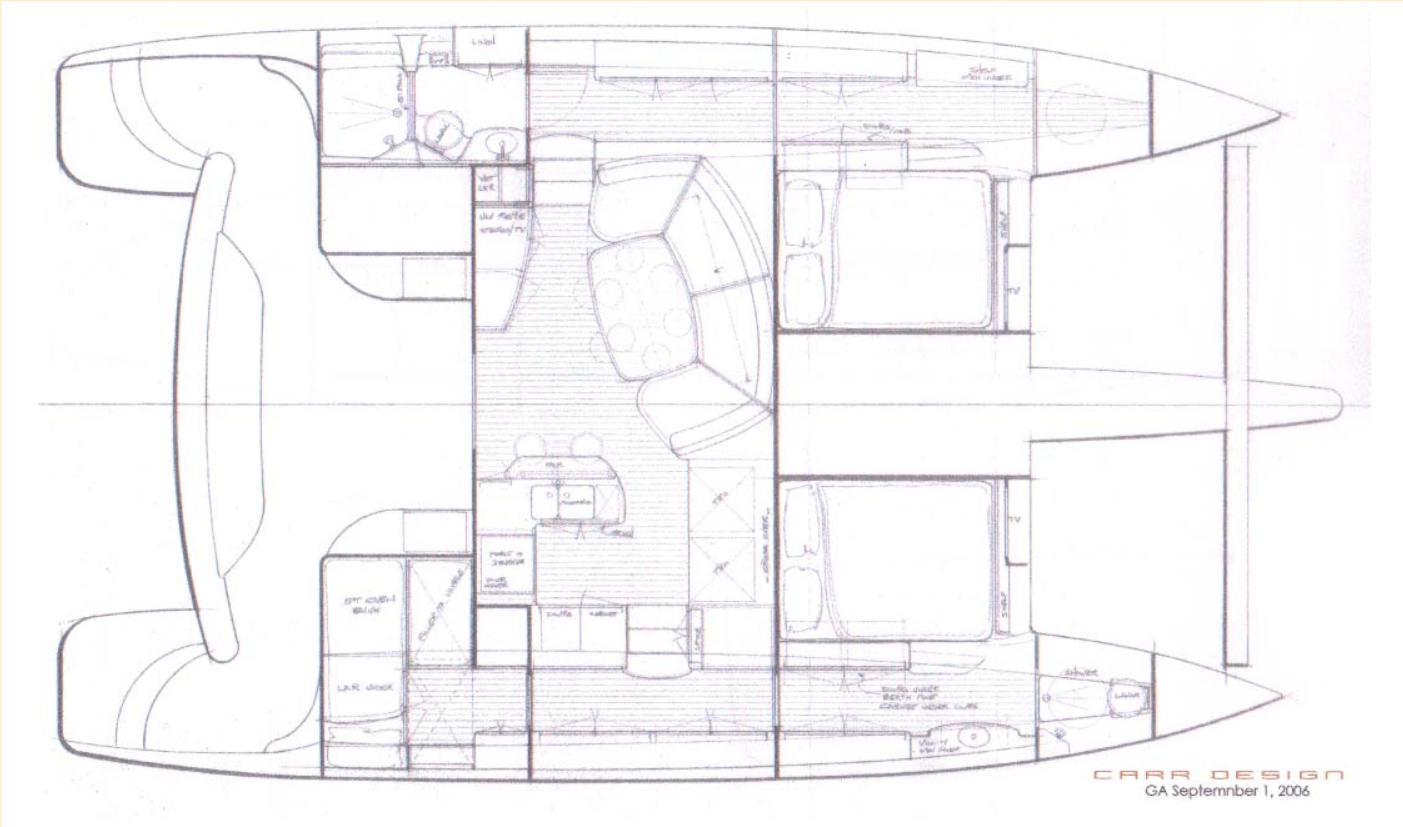
L.O.A	12.2 metres 40ft
B.O.A	7.2 metres 23'6"
Draft with Boards	800 mm 3.2 "
Headroom in hulls	1.95 metres 6'4"
Headroom in bridgedeck	1.95 metres 6' 4"
Mast height	17.260 metres 57ft
Sail area (main + headsails)	157 square metres
Payload	1850 kilograms
Displacement	5,750 kilograms
Displacement Light Ship	4,125 kilograms
B/Deck clearance	800mm
Fuel capacity	380 litres
Water capacity	800 litres
Motors	2 x YM30 Diesel Saildrives
Motoring speed - cruising	8 knots
Motoring speed - top	9.5 knots
Sailing speed	10+ knots



Internal Furniture:

Internal Furniture will be available either as DFX files for routing or fully moulded fibreglass modules ready to be placed in position as per this layout





This Layout is available for both the Sailing Fusion and also the soon to be released Power version.



Custom Interiors:

By purchasing a Kit, the option is yours whether to order all of the optional furniture kit, or any part thereof and you can then customise the balance of the fitout to suit your own personal needs such as these custom items.



The Moulded furniture has an antique white, coloured gelcoat finish. This is a hard wearing surface that can be easily cleaned. If your choice is a timber finish, then any type of timber laminate can be applied, such as New Age or Lamipanel.



Support:

Fusion Catamarans offer full support to its clients, by way of CD, Video, Assembly Manuals, the MCG Construction site, Full sets of Plans, Help with Survey requirements, Suppliers list and contact details, plus access has been made for you to deal direct with the major suppliers and manufacturers. The engineer, and members of the design team can also be contacted direct. It couldn't be easier. . .

Pricing:

The Fusion 40 Kit of Components 82,000 Euro

(Packing List available on request)

The Targa Bar included

Internal Furniture Moulds (when available) \$ T.B.A

Prices do not include Freight or Local Taxes

